

Kentucky

F A R M • B U R E A U • N E W S



2019 SCHOLARSHIP ISSUE

KFB MEASURE-THE-CANDIDATE FORUM
GUBERNATORIAL NOMINEES DISCUSS PRIORITY ISSUES

KFB 100 YEARS
EST. 1919

AUGUST 2019

Capture the power of the sun



Cooperative Solar

solar power from your local electric cooperative

www.cooperativesolar.com

Kentucky's Touchstone Energy[®] Cooperatives 



KENTUCKY FARM BUREAU NEWS
Volume 18 | No. 6
August 2019

CONTENTS

PRESIDENT'S COLUMN	3
COMMENT COLUMN	5
MEASURE-THE-CANDIDATE FORUM	6
MARKETBASKET SURVEY	7
TOBACCO UPDATE	8
SCHOLARSHIPS	10
A SUMMER OF LEARNING	16
COUNTY CORNER	18
MARKETS	20
CANDID COVERSATION	22
DOWN THE BACKROADS	26

Cover photo by Tim Thornberry
A view from Graves County, Kentucky

Kentucky Farm Bureau News is published ten times per year. Combined issues for December-January and June-July are sent to all members. The remaining eight issues go to regular members. Bulk postage rate paid at Lebanon Junction, Ky. Changes in address should be mailed to KFB Communications Division, PO Box 20700, Louisville, Ky. 40250.

All advertising accepted subject to publisher's approval.

Advertisers must assume liability of content of their advertising.

For rates and information call 1.800.798.2691

President's COLUMN

IT'S STATE FAIR TIME IN KENTUCKY



By the time Kentucky Farm Bureau was founded as an organization in 1919, the Kentucky State Fair was already celebrating its 17th birthday, officially. But the fair has roots that date back to 1816, making it one of the oldest fair celebrations in the country.

Because of its rich heritage, our state fair is also one of the best of its kind, anywhere. But it's easy to take something like that for granted by living here and being a part of this great event year after year. We've grown accustomed to having such a wonderful state fair.

We have become used to the fact that each year, all things good about and from Kentucky, show up at our state fair to delight us, to educate us, to feed us, and to make us proud to be Kentuckians. We have come to expect that.

And each year, we are not disappointed. I really can't remember the very first state fair I went to as a child, but I can tell you that each year I get that child-like excitement inside when I come to the fairgrounds that first day and enjoy the opening Commodity Breakfast.

I wait in anticipation, as always, when those champion country hams are being judged. I marvel at the exhibits brought by the thousands of young people representing the many student organizations in the state.

I get goose bumps each and every year during the auction of the grand champion country ham during the KFB Country Ham Breakfast. I visit with old and new friends each year walking through the Pride of the Counties exhibits.

Last year was the first for the AgLand display and it was a huge hit. I can't wait to see it again. We also saw the traditional Sale of Champions become the Championship Drive showcasing dozens of youth showing their livestock.

I can't help but tap my foot to the numerous musical venues found around the fair, including KFB's Annual Gospel Music Showcase. And I love to see the beautiful show horses strut around Freedom Hall.

But of all the things to see and do around the fair each year, I love seeing Kentucky agriculture on display at every turn. And I take pride in our organization being such a big part of this event.

This fair, as is the case with many other state fairs, got its start as being a premiere event to show agriculture at its best, and that hasn't changed throughout its life. There may be different carnival rides and entertaining shows from year to year. But the foundation of this great event lies within the rural communities that are represented every August.

I hope you will take time to visit the Kentucky State Fair this year and enjoy all that is good in the Commonwealth. Oh, and don't forget to stop by and visit with Freddy Farm Bureau. He's looking forward to it, too.

Mark Haney
President
Kentucky Farm Bureau

2019 COUNTY ANNUAL MEETINGS

All times are local

Adair County

September 17, 2019, 7:00 p.m.
Lindsey Wilson College Dining Hall

Barren County

September 14, 2019, 6:00 p.m.
Cave City Convention Center

Bath County

September 17, 2019, 6:00 p.m.
Bath County Agriculture Center

Bell County

September 26, 2019, 6:00 p.m.
Bell County Farm Bureau Office

Boyle County

September 17, 2019, 7:00 p.m.
The Showroom, Danville

Breathitt County

September 27, 2019, 6:00 p.m.
Quicksand RCARS

Breckinridge County

September 3, 2019, 6:00 p.m.
Breckinridge County Extension Office

Butler County

September 10, 2019, 6:30 p.m.
Eva J. Hawes Building

Bullitt County

September 21, 2019, 6:00 p.m.
Bullitt County Extension Office

Caldwell County

September 14, 2019, 6:00 p.m.
Caldwell County High School Cafeteria

Calloway County

September 3, 2019, 7:30 p.m.
Calloway County Farm Bureau

Campbell County

September 22, 2019, 2:30 p.m.
Neltner Farm, Cold Spring

Carter County

September 9, 2019 6:00 p.m.
Carter County Farm Bureau Office

Clark County

October 4, 2019, 6:00 p.m.
Clark County Farm Bureau Office

Clinton County

September 12, 2019, 6:00 p.m.
Fairgrounds

Crittenden County

September 10, 2019, 6: p.m.
Ed Tech Center

Cumberland County

September 27, 2019, 6:00 p.m.
Veterans Memorial Building

Daviess County

August 13, 2019 5:00 p.m.
Reid's Orchard

Fayette County

October 15, 2019, 6:30 p.m.
Fayette County Extension office

Grant County

September 13, 2019, 6:00 p.m.
Alpine Dairy Farm, Dry Ridge

Grayson County

September 24th, 2019, 6:00pm
Centre on Main

Hancock County

September 5, 2019, 6:00 p.m.
Hancock County Fairgrounds

Hardin County

September 20, 2019, 6:30pm
Hardin Extension Office

Harrison County

September 12, 2019, 6:00 p.m.
McCauley Building

Harrison County Fairgrounds

Hopkins County

September 6, 2019, 6:00 p.m.
Ballard Convention Center

Jackson County

September 16, 2019, 6:00 p.m.
Jackson Energy Farm Hwy 290

Kenton County

September 7, 2019
Honey Locust Farm

Knox County

September 6, 2019, 6:00 p.m.
Extension Office Pavilion

Letcher County

September 16, 2019, 4:00 p.m.
Letcher County Farm Bureau Office

Lincoln County

September 12, 2019, 6:30 p.m.
Lincoln County Fairgrounds

Logan County

September 7, 2019, 6:00 p.m.
Logan County Extension Office

Lyon County

September 13, 2019, 6:00 p.m.
Lyon County Convention Center

Mason County

September 30, 2019, 7:00 p.m.
Extension Office, Maysville

Meade County

August 19, 2019, 6:00 p.m.
Meade County Farm Bureau

Mercer County

September 9, 2019, 6:00 p.m.
Mercer County Extension Office



Payments this low add up to a lot of work getting done.

The L2501DT was built to handle any job with ease. And get it done right. Available now with payments so low that putting it to work is anything but a burden. Visit us today.



\$139* A MONTH 84 MONTHS

CYNTHIANA HAYDON EQUIPMENT INC. 859-234-4621 800-649-7683	HOPKINSVILLE H & R AGRI-POWER 800-844-3918 www.hragripower.com	MURRAY MCKEEL EQUIPMENT CO. 800-852-9736 mckeelequipment.com	RUSSELLVILLE H & R AGRI-POWER 800-264-2474 www.hragripower.com
GLASGOW J & J SALES INC. 800-669-5480 www.jjsales.com 270-651-5480	MORGANFIELD H & R AGRI-POWER 800-869-1421 www.hragripower.com	RICHMOND DERBY STATE EQUIPMENT 859-623-5167	SHELBYVILLE JACOBI SALES INC. 800-730-2684 jacobisales.com

KubotaUSA.com

*Excludes taxes and fees.
 © Kubota Tractor Corporation, 2019. 0% A.P.R., 20% down, financing for 84 months on purchases of new Kubota L2501DT w/R4 tires from participating dealers in-stock inventory is available to qualified purchasers through Kubota Credit Corporation USA; subject to credit approval. Example: 84 monthly payments of \$11.90 per \$1,000 financed. Example amount based on sales price of \$14,595. Each dealer sets own price. Prices and payments may vary. Offer expires 8/31/19.



COMMENT COLUMN

Kentucky Farm Bureau is a voluntary organization of farm families and their allies dedicated to serving as the voice of agriculture by identifying problems, developing solutions and taking actions which will improve net farm income, achieve better economic opportunities and enhance the quality of life for all.

KFB OFFICERS

Mark HaneyPresident
Eddie Melton 1st Vice President
Sharon Furches 2nd Vice President
Drew Graham Executive Vice President

KFB DIRECTORS

Glenn HowellFulton
Sharon Furches Murray
Kelly Thurman Livermore
Eddie Melton Sebree
Mary Kate Kordes Central City
Larry Thomas Elizabethtown
Pat Henderson Irvington
Ray Allan Mackey Elizabethtown
Jay Coleman Cave City
Larry Clark Greensburg
Scott Travis Cox's Creek
Randy Chrisman Lawrenceburg
Joe Paul Mattingly Raywick
David Chappell Owenton
Mark Kinsey Crittenden
Mark Haney Nancy
Kim McCoy Burkesville
Victor Rexroat Russell Springs
David L. Campbell Stanford
Terry Lawson Mt. Vernon
Alex Barnett Cynthia
Shane Wiseman Winchester
David McGlone Grayson
Carroll Amyx Campton
Cloyce Hinkle Artemus
Don Miniard Bledsoe
Marshall Coyle Owingsville
Vickie Bryant Tompkinsville
Tyler Ferguson Flat Gap
Roger Fannin Harlan
Nancy Cox Lexington
Brandon Davis Frankfort
Greg Drake Bowling Green

KENTUCKY FARM BUREAU NEWS WWW.KYFB.COM

www.kyfb.com/federation/member-benefits

Editor Tim Thornberry

Creative Director Meredith Davis Woods
..... Meredith Davis Design

Advertising Casey McNeal
..... Times-Citizen Communications
..... 800 798-2691 (ext. 334)

Circulation Kelley Parks
..... (502) 495-5112

A GEN Z MESSAGE TO THE NEXT CROP

I was born in January 1997 and turned 22 this year. I will graduate from college just before I turn 23, entering into a moderately healthy job market. I was four years old when terrorists attacked our country on 9/11 and have almost no recollection of the immediate effects that event had on our country. But my entire childhood was spent living in a nation at war.

All of this information about my life can be summed up in one phrase: I am one of nearly 61 million members of Generation Z. I am part of the generation after Millennials and have a message for the next crop of agriculturalists, my fellow Gen Z'ers. So, if you were born after 1996, sit down, make sure your phone is charged, and let's have a chat.

Here's the thing: The Pew Research Center reports our generation is on track to be the most educated generation in history, yet only 13% of us were raised in a rural area. This means that agriculture needs us, because agriculture needs smart people who are interested in feeding, fueling and clothing the world.

But agriculture doesn't just need you to hang around the farm from the day you are born until the day you die, content with doing things the way your parents do, or your grandparents did.

Agriculture needs people who are college-educated, have off-the-farm experiences and see the world through a broader lens, because the challenges rural America will face in the coming decades require modern solutions. Leave the farm for a few years to get your degree or for a decade to work in an industry unrelated to agriculture. You will be better for your experiences outside of your own fencerows. Your farm will be better for those experiences, too.

I also want you to know that agriculture has a place for you, even if it is not directly working on the farm. I hope you can find a place on the farm, but agriculture, as we used to say in my high school FFA chapter, is "more than cows, sows and plows." Agriculture needs you in the board room, in the laboratory and in regional sales offices across the country. It needs you in the corner office of a local bank, in classrooms from Pomona, Kansas, to Pomona, California, and in the halls of Congress.

If there is only one thing you take away from this message, I hope it is that agriculture needs you to think outside of your farm, your hometown, your state. Agriculture needs you to dream bigger, even if it is only for a little while. It's no secret that agriculture is struggling today, but it is people like you and me who will drive the industry forward, as long as we embrace the challenges of belonging to the next crop.



Bailey Corwine

Communications Summer Intern,
American Farm Bureau Federation



KFB President Mark Haney addressed Board members and guests during the Measure-the-Candidate Forum.

KFB HOSTS MEASURE-THE-CANDIDATE FORUM FEATURING KENTUCKY GUBERNATORIAL NOMINEES

Matt Bevin and Andy Beshear field KFB priority issues questions.

In keeping with a long-standing tradition, Kentucky Farm Bureau (KFB) hosted a Gubernatorial Measure-the-Candidate (MTC) forum on July 17 at their state office in Louisville. The forum consisted of a question and answer session regarding KFB's top priorities with Republican Nominee Matt Bevin and Democratic Nominee Andy Beshear.

KFB President Mark Haney said the forum created an opportunity for members to hear from both candidates on a variety of topics.

"It's a part of our history as an organization to hold these types of forums allowing members to hear from candidates on a number of issues in order to make a more informed choice on Election Day," he said.

“We take pride in the fact that we do this in a very non-partisan way while encouraging our members and all registered voters to exercise their Constitutional right to vote.”

- Mark Haney

Bevin and Beshear fielded questions from KFB First Vice President Eddie Melton and Second Vice President Sharon Furches on topics that included the state budget, taxation, rural development and infrastructure.

Melton said the priorities discussed during the recent MTC forum are, in large part, based upon issues confronting KFB membership and the agriculture industry.

"These priorities are very important to our members, and the success of our advocacy efforts can often affect all of our citizens in very positive ways," he said. "No matter who the candidate is, it's important we reach out to them and let them know our stance, as an organization, on these issues as we strive to make life better for all Kentuckians."

Furches said the forums also help candidates to become more familiar with KFB priority issues.

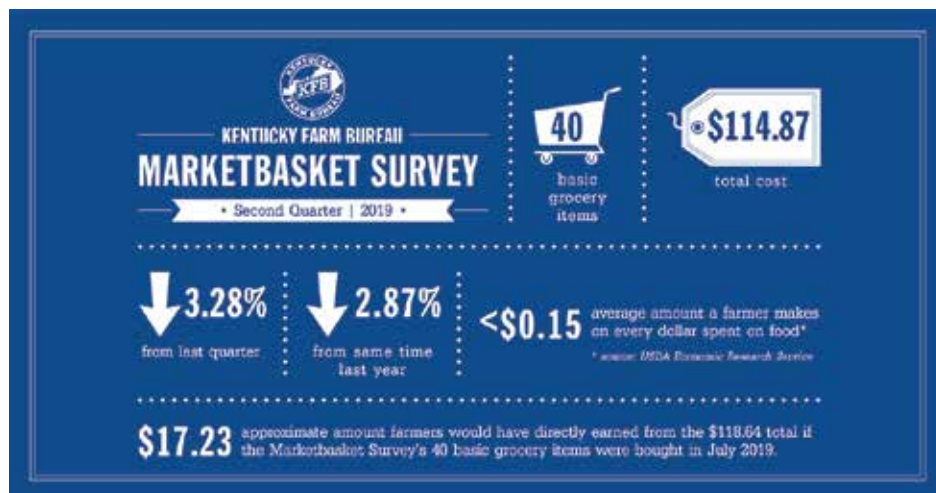
"Having been involved in Farm Bureau over the years, I have seen how beneficial these types of events can be to the participating candidates," she said. "It's critical they understand KFB's stance on these issues as we continue to advocate for our members, our agricultural industry and the state's rural communities."

During the forum, each candidate had the opportunity to make opening and closing statements in addition to answering questions from the KFB Executive Committee. They also held post-forum press conferences to address questions from the attending press.

The forum was streamed live by KFB Studios and is available, along with other Studio productions at [Youtube.com/kentuckyfarmbureau](https://www.youtube.com/kentuckyfarmbureau).

The candidates were presented a questionnaire at the closing of the forum. Those answers will be published in the 2019 Election Guide of the Kentucky Farm Bureau News in October.

KFB MARKETBASKET SURVEY SHOWS A SLIGHT DECLINE IN FOOD PRICES FOR SECOND QUARTER



The most recent Kentucky Farm Bureau (KFB) Marketbasket Survey indicates a slight decline to the overall cost of food during the second quarter of 2019. The Marketbasket Survey is conducted at the end of each quarter and monitors overall and categorical trends in food prices across the Commonwealth. The survey gathers the prices of 40 basic food items throughout the state and then averages the numbers into six categories: beef, pork, poultry, dairy, fruits and vegetables, and grains.

The average cost of surveyed items in the second quarter was \$114.87, down 3.28 percent from the \$118.64 first-quarter mark. These findings are in line with the small declines experienced in the last two quarters of 2018.

Nationally, the Bureau of Labor Statistics' latest Consumer Price Index for food at home, "declined 0.2 percent after increasing 0.3 percent in May. Four of the six major grocery store food group indexes declined in June. The index for meats, poultry, fish, and eggs, which rose 0.8 percent in May, fell 0.7 percent in June as the index for beef fell 1.3 percent. The indexes for cereals and bakery products and for nonalcoholic beverages both fell 0.6 percent in June after rising in May. The index for fruits and vegetables fell 0.5 percent in June, its third consecutive decline."

Kentucky Marketbasket Survey specifics:

Second quarter average prices of specific items and commodities saw declines in each of the food categories with the largest drop occurring in pork items. Those prices dropped by 8.32

percent. The next largest decline was in grain products which experienced a decline of 7.74 percent. It should be noted that these two categories experienced the largest price increases in the first quarter. Surveyed beef prices continued their year long price decrease with a modest 0.57 percent drop this quarter, with is a 2.01 percent decline in the first quarter.

Agricultural Economics in Food Prices:

Kentuckians and all Americans continue to enjoy some of the lowest food prices in the world. Shoppers in the U.S. spend only about seven percent of their disposable income on food each year. The average U.S. farmer produces enough food and fiber to provide for about 154 people – a number that has continuously grown since 1940 when the average was 19 people per farmer.

HARVEST HAY THE VERMEER WAY



FORAGE SOLUTIONS FOR YOUR CATTLE OPERATION.

When it comes to hay and forage, harvest the Vermeer way. We've been leading the industry for more than 70 years by offering innovative products and features that are built with heavy-duty components to be durable and versatile on your operation. Call or visit us to find out why farmers and ranchers just like you are switching to Vermeer.

Vermeer



CYNTHIANA
HAYDON
EQUIPMENT INC.
859-234-4621
800-649-7683

GLASGOW
J & J SALES INC.
800-669-5480
www.jjsales.com
270-651-5480

OWENSBORO
H & R AGRI-POWER
800-264-1504
www.hragripower.com

RICHMOND
DERBY STATE
EQUIPMENT
859-623-5167

RUSSELLVILLE
H & R AGRI-POWER
800-264-2474
www.hragripower.com



Cody Burke

TOBACCO UPDATE: TRADITIONAL CROP STILL HANGING AROUND

But growers are facing another tough growing season

There are a lot of reasons raising a tobacco crop isn't easy. It is very labor intensive, it is facing continued declines in the marketplace, and the weather over the last two growing seasons has been anything but ideal for production purposes.

Last year, at this time, crop conditions stood at 19 percent fair and 64 percent good. This year, those conditions are being reported as 30 percent fair and 54 percent good.

Bob Pearce, University of Kentucky (UK) College of Agriculture, Food and Environment, Burley Tobacco Extension Specialist said it has been a mixed bag for the crop this year, condition-wise.

"Growers in some areas have received large amounts of rain through June resulting in drowning, skald, poor root growth, and stunted crops," he said. "Early blooming has been significant, as well. Since late June the weather has been hot and dry and black shank has really been showing in the last few weeks."

Pearce added that despite the weather challenges, there are still some crops out there doing well, which is some consolation for those producers sitting on top of a good crop. However, growing tobacco is just half the battle because the marketplace can be as daunting as Mother Nature.

Pearce said with a short 2018 crop it was disheartening to see some contracts cut this year, something that could indicate a decline in U.S. burley demand.

Dark tobacco producers may have a slightly better market environment, but still with challenges. Andy Bailey, UK Dark Tobacco Extension Specialist said, in West Kentucky (where most of the dark tobacco crop is grown in this state) grower

numbers have declined and some contract volume decline for dark tobacco has been realized, but not as severe as what burley growers have seen.

"Our dark production is probably down 10 to 15 percent this year and I have serious concerns about the longevity of the burley industry in Kentucky, but I still think that burley will continue to be grown here for a long time, just at a reduced level," he said. "I expect to see continued consolidation of production in both burley and dark tobacco."

UK Agriculture Economist Will Snell sees a similar picture. He said there is future uncertainty when it comes to the crop, but that is no secret to growers. However, export markets could still be somewhat positive for producers in these uncertain times.

"An increasing percentage of our burley, and almost all of our dark tobacco has been used by domestic manufacturers. Some of this could be attributed to ample/less expensive burley in global markets, along with the increased regulations and the introduction of alternative tobacco products in foreign markets," he said. "But exports are still critical and will likely continue to account for over half of the crop demand for U.S. burley."

Challenges may be plentiful in the world of tobacco production, but many farmers still find it profitable, as it generates about \$250 to \$300 million annually for those remaining in the tobacco-growing business in Kentucky.

A Young Farmer Perspective

Cody Burke of Fleming County is one producer who is making a profit while defying the odds of growing the crop, from a number of perspectives.

First of all, he is a young farmer finishing up his senior year at the University of Kentucky. Secondly, he is raising a small crop of tobacco, unlike many other producers in the state who have expanded production. And he feels the small producer can still be of value, as long as tobacco is a production crop.

Burke said growing the crop is as much about tradition as anything, although it has been a money maker for him.

"My grandfather raised tobacco on the same farm where I now grow a crop, until the buyout, and like a lot of farmers, he got out after that. But while I was in high school, I saw raising a crop as a way to make money to pay for college," he said. "I didn't like the idea of going to work in a fast-food restaurant like everyone else my age and I really wanted to determine how much money I made based on how hard I wanted to work, not on getting paid by the hour."

That philosophy led to his first crop of an acre which has now turned into three-and-a-half acres for this, his fifth crop.

Burke's strategy for tobacco production is fairly simple; he doesn't raise more than he and a few family members or friends can handle, saving countless dollars on labor costs. And he has made it just a segment of the overall operation on the family farm, which has been home to purebred Gelbvieh for three generations.

Being a tobacco producer has given Burke a sense of pride in being a part of a tradition that dates back for generations in the Commonwealth. But he is also a realist, recognizing the challenges that producers are facing.

“It’s a lot of hard work but I really enjoy raising this crop, and I realize I don’t have to make a living from it. But tobacco paid for this farm and it is paying most of my college expenses, and as long as it’s grown in Kentucky, I want to be growing it.”

- Cody Burke

"There's no doubt that demand is down, but I think there will always be a market for American Burley," he said.

"I recognize the fact that many small growers have left the industry and the marketplace is more favorable for larger scale production. But I also think there is still a place for a small producer using the crop as part of a more diversified operation; not the sole money-maker but part of the overall production of the farm."

Burke, who serves as the Fleming County Farm Bureau Young Farmer Chair, said having tobacco as part of their entire farming operation just makes sense to him.

"This is a way to take a small farm and really help with cash flow, when I look at net dollars per acre," he said. "Labor costs, for the most part, are non-existent for me. The infrastructure I need was already here, so all I really had to do was invest in some equipment. Because of all those things coming together, this has been good for me. But at the end of the day, I just love raising tobacco on this farm."

Landowners: Key to Program's Success!

Kentucky's hunters continue to feed the hungry by donating their game.

Crop damage?



Photo by Stevecreek.com

Kentucky Hunters for the Hungry

is a positive force for good. ENROLL YOUR FARM in the Kentucky Whitetail Access Program and KHFH will connect you with hunters to remove crop damaging deer from your property. We will send you information on interested hunters. **You control the decisions. You control the outcome. Join the fight and help feed those in need.**

Hunters may drop off a tele-checked deer at a participating processor. KHFH pays for the processing. Dare to Care then distributes the ground venison to local food banks and soup kitchens. Monetary donations are also welcome. Please visit kyhuntersforthehungry.info



Healthy meals get a great start with venison.

*Kentucky Hunters for the Hungry and Dare to Care Food Bank
striving to fight hunger in Kentucky.*

Visit: kyhuntersforthehungry.info and daretocare.org



2019 KFB SCHOLARSHIP RECIPIENTS

KFB and county Farm Bureau organizations provided 360 college scholarship grants this year totaling \$462,300. The scholarships were awarded to recipients who displayed the greatest levels of academic excellence, involvement in extracurricular activities, leadership abilities and financial need. Scholarship sponsors and the recipients are:

Sam Moore Scholarship – \$4,000

Awarded to a student attending a Kentucky college/university and pursuing a four-year degree in animal health/veterinary technology or a related field.

Alex Burke, Breckinridge County

Leadership in Agriculture Scholarship – \$3,000 each

Awarded to students of farm families attending a Kentucky college or university.

Camryn McManis, Henry County; Anna Sweets, Warren County

KFB Young Farmer Scholarship – \$2,000

Awarded to a college upperclassman. Student must be attending a Kentucky college/university in agriculture or a related field.

Jacob Patterson, Pulaski County

KFB Young Farmer Scholarship – \$1,000

Awarded to a college upperclassman. Student must be attending a Kentucky college/university and majoring in agriculture or a related field.

Justin Arnett, Montgomery County

Beautification League of Louisville Scholarship – \$1,000

Awarded to a student attending a Kentucky college/university and pursuing a four-year degree in horticulture or landscape architecture.

Braedon Hooke, Christian County

KFB Employee Child Scholarship - \$2,000

Joseph Cain, Washington County

KFB Mutual Insurance Company Scholarship – \$2,000 each

Mollee Flannigan, Lewis County; Jasper Hampton, Pulaski County

KFB Insurance Agents Association Scholarship – \$1,000 each

Austin Brashear, Letcher County

Kentucky Farm Bureau Education Foundation Scholarship – \$1,000 each

Madison Goecke, Bracken County; AJ Miller, Breathitt

County; Kaden Cummins, Caldwell County; Elayna Bedwell, Calloway County; Logan Mattingly, Calloway County; Hailey Watson, Calloway County; Keanna Thompson, Clinton County; John Duvall, Crittenden County; MaKayla Slone, Floyd County; Robert Tackett, Floyd County; Noah Lyles, Franklin County; Katherine French, Hardin County; Janice Dean, Harrison County; Dorothy Golden, Henry County; Micah Center, Hopkins County; Paige Peters, Jackson County; John Fairchild, Johnson County; Olivia-Marie Robinson, Laurel County; Jordan Stepp, Lawrence County; Daulton McGowan, Lewis County; Kaleb Schoonover, Lyon County; Lauren Rowlette, Madison County; Katelyn Ward, McLean County; Carla Bravo, Meade County; Sarah Davis, Pulaski County

Adair County Farm Bureau JU Rogers Memorial Scholarship – \$1,000 each

Byron Chandler Corbin, Kendyl Macy Hardin

Allen County Farm Bureau Scholarship – \$1,000

Jason Sikes

Allen County Farm Bureau Ralston Bewley Scholarship – \$500

Mason Towerly

Anderson County Farm Bureau George Cotton Memorial Scholarship – \$2,000 each

Eve Gettelfinger, Noah Medley, Adam Sanderson

Anderson County Farm Bureau George Cotton Memorial Scholarship – \$1,500

Austin Thornberry

Ballard County Farm Bureau Scholarship – \$1,000 each

Chloe Irvin, Sydney Leigh, Matt Mallory

Barren County Farm Bureau College Student Scholarship – \$1,000 each

Braden Burks, Matteo Wyatt

Barren County Farm Bureau High School Senior Scholarship -- \$1,000 each

Zackary Owen, Mary E. Russell

Bath County Farm Bureau Scholarship - \$1,500 each

Talyn Alderman, Jacob Conyers, Landon Swartz

Bell County Farm Bureau Pat Biggerstaff Scholarship – \$1,000 each

James N. Adkins, Emily N. Napier

**Bell County Farm Bureau Ray Reed
Scholarship – \$1,000 each**

Sarah Payton Bingham, Kumari Bishakha, Ethan W. Brock, Christopher A. Callihan, Dennis L. Estes, Jeana L. Fultz, Mykel A. Griffin, Emma N. Helton, Dana Faith Howard, Bennett J. Lee, Emily N. Napier, Hagen Owens, Franki Pursifull, Michael Swedersky

**Boone County Farm Bureau
Scholarship – \$1,000 each**

Robert Baumgartner, Chloe Bernesser

**Boyle County Farm Bureau David C. Sparrow
Memorial Scholarship – \$1,000**

Michaela Carpenter

**Bracken County Farm Bureau
Scholarship – \$500 each**

Nicole Arthur, Natalie Bell, Tad Fisher, Madison Goecke, Kelsey Hitch, Callie Jarrell, Collin Jefferson, Tyler Rice

**Breathitt County Farm Bureau
Scholarship – \$4,000 each**

Brittney Dennis, Megan Ernst, Jessilyn Neace

**Breckinridge County Farm Bureau
Scholarship – \$1,000 each**

Alex Burke, Lindsey Whitfill

**Bullitt County Farm Bureau Board
Scholarship – \$2,000 each**

Alexis Bishop, Glen Butler, Destiney Crump, Hannah Pyles

**Bullitt County Farm Bureau Young Farmer's
Scholarship – \$1,000 each**

Destiney Crump, Jacob Hall

Butler County Farm Bureau Scholarship – \$1,000

Heath Cardwell

**Butler County Farm Bureau Current College Student
Scholarship – \$1,000**

Gracie Deel

Caldwell County Farm Bureau Scholarship – \$1,000

W. Ethan Cotton

**Calloway County Farm Bureau
Scholarship – \$1,500 each**

Alex Thomas Cooper, Logan Thomas Mattingly, Joseph Garrett Scott, Gracelyn Elizabeth Young

**Campbell County Farm Bureau
Scholarship – \$1,000 each**

Mirena Combs, Jacob Lippert, Ellinor Martin, Anna Rust, Jake Schneider, Rusty Wolf

**Carroll County Farm Bureau
Scholarship – \$1,000 each**

Sidni Davidson, Madeline Watts

Casey County Farm Bureau Scholarship – \$500 each

Bailey Caudill, Riley Hoskins, Alexis Kane, Grace Passmore, Zachary Todd

**Christian County Farm Bureau
Scholarship – \$2,000 each**

Madelyn Bennett, Braedon Hooke, Victoria Sisk, Hudson Taylor

Clay County Farm Bureau Scholarship – \$2,000 each

Bethany D. Buttery, Joshua Cornett, Marisa Reid, Samuel M. Woods

Clinton County Farm Bureau Scholarship – \$500 each

Jon-Allen Cross, Jackson Harlan, Isabelle Moons, Keanna Thompson

**Crittenden County Farm Bureau
Scholarship – \$1,000 each**

John Duvall, Shelby Summers

**Cumberland County Farm Bureau
Scholarship – \$1,000 each**

Grace Alexander, Haley Wright

Daviess County Farm Bureau Scholarship – \$2,000

Ivy Violet-Pearl Stites

**Daviess County FB Insurance Agents
Scholarship – \$2,000**

Brittney Faith Booker

**Daviess County Farm Bureau Tom Curtsinger
Scholarship – \$2,000**

Chandler Reisz Krampe

**Daviess County Farm Bureau Daniel L. Turley
Scholarship – \$2,000**

Sarah Marie Englert

**Daviess County Farm Bureau Young Farmer
Scholarship – \$1,000**

Elizabeth Ann Boarman

**Fayette County Farm Bureau
Scholarship – \$20,000 each**

Aubrey Dawson, Grant Walles

Fayette County Farm Bureau Scholarship – \$10,000

Christina Mammen

Floyd County Farm Bureau Scholarship – \$2,000 each

Lara Cali Campbell, Cole DeRossett, Madison Jervis, Nathaniel J. L. Mims, McKayla Slone

Fulton County Farm Bureau Scholarship – \$250 each

Joshua Amberg Garrigan, Rachel Madison Kelly, Jake Edward Mayo, Noah Lattus Miller, Karlie Elise Williams

Garrard County Farm Bureau Henry West Agricultural Scholarship – \$2,000

Macie White

Grant County Farm Bureau Scholarship – \$1,000 each

Corey Fryman, Ryan Mitts, Paige Simpson, Trent Smith, Chase Turner

Hancock County Farm Bureau Scholarship – \$1,000 each

Bailee Boling, Dillon Sebastian

Hardin County Farm Bureau Scholarship – \$1,000 each

William Abel, Carolee Grace Coleman, Malorie Cox, Katelyn Deneen, Elizabeth Mattingly, Whitney Nicole Peters, Kayla Slaubaugh, Destiny Tharpe

Hardin County Farm Bureau Geneva Shipp Memorial Scholarship – \$1,000 each

Katherine French, Janece Harrington

Hardin County Farm Bureau Ray Mackey Memorial Scholarship – \$1,000 each

Clarissa Mackey, Marie Noel

Hardin County Farm Bureau Robert E. “Bobby” Thomas Memorial Scholarship – \$1,000 each

Scott Nelson, Samuel Smith

Hardin County Farm Bureau Jesse Shipp Memorial Scholarship – \$1,000

Trenton Thomas

Harlan County Farm Bureau Scholarship – \$1,500 each

Rhileigh Alred, Katelyn Hensley, Jordan Jackson, Elaina McKnight, Emersyn Noah

Harlan County Farm Bureau Agents Scholarship – \$500 each

Amanda Caudill, Kilian Ledford

Harrison County Farm Bureau Scholarship – \$1,000 each

Hannah Perkins, Madeline Sparks

Hart County Farm Bureau Scholarship – \$500 each

Jasmine Benningfield, Abigail Waddle

Henderson County Farm Bureau Scholarship – \$500 each

Jacy M. Elliott, Marissa Renee Lynn

Henderson County Farm Bureau Academic Scholarship – \$500 each

Cassandra Marie Brown, Hannah M. Farley, Elizabeth

Frances Guier, Riley Katherine Lovell, Mary Kate McIndoo, Maggie Elizabeth Vincent, Gabrielle Starr Waggener

Henderson County Farm Bureau Hugh Johns Memorial Scholarship – \$1,000

Alyssa Morgan Vandiver

Hickman County Farm Bureau Scholarship – \$500 each

Isabella Buckingham, Harlee Byassee, Ward Carter, Will Templeton

Hopkins County Farm Bureau Scholarship – \$2,000 each

Micah Center, Olivia Latham, Mia Wright

Jackson County Farm Bureau Scholarship – \$1,000

Tyrah Jones

Johnson County Farm Bureau Scholarship – \$4,000 each

Allison Faith Forrest, Benjamin Bradley Plaxico

Kenton County Farm Bureau Scholarship – \$2,000 each

Hannah Bishop, Emma Briney, Grace Holtkamp, Catherine Kremer

Knott County Farm Bureau Scholarship – \$1,000

Lucas Hall

Knox County Farm Bureau Scholarship – \$1,000 each

Dalton Cook, Kendall Gray

LaRue County Farm Bureau Scholarship – \$1,000 each

Chase Baker, Kalli Flanders, Jacob Gentry, Parker Smith

Laurel County Farm Bureau Scholarship – \$4,000 each

Kendall Bengel, Gunner Whitaker

Letcher County Farm Bureau Scholarship – \$1,000

Lakota Lewis

Lewis County Farm Bureau Vo-Ag Scholarship – \$500 each

Gabriella Thayer, Emily Wills

Lewis County Farm Bureau Scholarship – \$1,000 each

Damon Kennedy, Amy Smith, Breanna Walker

Livingston County Farm Bureau Scholarship – \$1,000 each

Abigail Calender, Jack Howard, Josey Tolley

Lyon County Farm Bureau Scholarship – \$500 each

Trinity Haines, Chase Young

**Madison County Farm Bureau
Scholarship – \$1,000 each**

Seth Anderson, Tanner Cruse, Bethany R. Groce,
Lauren Rowlette, Cheyenne Shearer, Lily Grace Wilson

Marion County Farm Bureau Scholarship – \$500 each

Elise Carpenter, Lee Ann Childers, Alyssa Followay,
Chloe Mattingly, Abby Elizabeth Scott

Martin County Farm Bureau Scholarship – \$1,000 each

Breanna Rice, Jaiden Robinson

Martin County Farm Bureau Scholarship – \$500 each

Bethany Crum, Savannah Harmon, Breanna Rice,
Jaiden Robinson, Fallyne Wefenstette

Mason County Farm Bureau Scholarship – \$1,000 each

Jared Collins, Sara Grayson, Beverly Hutchinson,
Madelyn McElfresh, Kaycee Moss, Victor Paco Franco
Reyes, Rachel Madison Rister

**McCracken County Farm Bureau
Scholarship – \$1,000 each**

Gabrielle Alexis Jo McLeod, Dorian Lee Record

**McLean County Farm Bureau Jack Taylor Memorial
Scholarship – \$1,000 each**

Margaret Ann Hayden, Mallory Renee Robertson

Meade County Farm Bureau Scholarship – \$1,000 each

Elizabeth Embry, Emily Vaughn

**Mercer County Farm Bureau
Scholarship – \$1,000 each**

Cole Clark, Aubrey Jones

Metcalfe County Farm Bureau Scholarship – \$500

Leah Thompson

**Monroe County Farm Bureau
Scholarship – \$1,000 each**

Cameron Garmon, John Hagan

**Montgomery County Farm Bureau
Scholarship – \$2,000**

Kallee M. Bruce

**Montgomery County Farm Bureau Ag
Scholarship – \$2,000**

Zoe G. Cannon

**Morgan County Farm Bureau Memorial
Scholarship – \$2,000 each**

Kristen Dawn Collins, Payton Cole Hampton, Alley Faith
Kemplin

**Muhlenberg County Farm Bureau
Scholarship – \$1,000 each**

Jenna Michele Rice, Alleson Camrin Short

**Nelson County Farm Bureau
Scholarship – \$1,000 each**

Abby Kathryn Berry, Jordan Elizabeth Cross, Easton
Anthony Culver, Carly Brooke Douglas, Justin Bradley
Gagne, Garrett Matthew Hall, Michael Wayne Hamilton,
Savanna Alexis Hill, McKenna Rose Hinkebein,
Nathaniel Scott Jones, Madison Elizabeth Lindsey,
Jordan Kaylee Miles, Cassie Michaela Parrish, Madeline
Brooke Robbins, Lydia Rose Sandefur, Jillian Brooke
Simpson, David Martin Williams, Stanley Larkin Williams

**Nicholas County Farm Bureau
Scholarship – \$500 each**

Marcus Gardner, Shelby Tedder

**Oldham County Farm Bureau
Scholarship – \$2,000 each**

Adam Kempf, Mary Kate Nevins

**Oldham County Farm Bureau Current College Student
Scholarship – \$2,000**

Madelyn Burgess

Owen County Farm Bureau Scholarship – \$750 each

Allison Burford, Hannah Johnson, Audrey Lewis, Kaitlyn
Parker

**Pendleton County Farm Bureau
Scholarship – \$500 each**

Emilee Ammerman, Brooklyn Browning

Pike County Farm Bureau Scholarship – \$500 each

Emily Adkins, Caitlyn Coleman, Peyton Elswick, Joshua
Hall, Haley Johnson, Karosta May, Emily Morgan,
Connor Roberts, Kennedy Stallard, Olivia Whitfield

**Pulaski County Farm Bureau
Scholarship – \$1,200 each**

Wiley Cain, Sarah Davis, Jasper Hampton, Taylor Young

Robertson County Farm Bureau Scholarship – \$500

Carley Turner

**Rockcastle County Farm Bureau
Scholarship – \$750 each**

Cole Ballinger, Cade Burdette, Zoe Carol Burdette,
Alexandria Hasty, Sydney Elizabeth Hines, Bailey
Johnson, Madison Pride

**Russell County Farm Bureau
Scholarship – \$2,000 each**

Colton Carnes, Brannon Lawson, Alexandra Wilson

Scott County Farm Bureau Scholarship – \$750 each

Caitlin Dawson, Lillian Demus, Suellen Smith, Hannah
Tirlea, Drew Varney, Harley Wagoner

Shelby County Farm Bureau Scholarship – \$1,000 each

Kaitlin Tucker, Mollie Wills

**Shelby County Farm Bureau Roy V. Catlett
Scholarship – \$1,000**

Britney Cox

**Shelby County Farm Bureau Current College
Student Scholarship – \$1,000**

Abby Wills

**Simpson County Farm Bureau
Scholarship – \$1,000 each**

Katelyn Marie Hollingsworth, Benjamin
David James

**Spencer County Farm Bureau
Scholarship – \$2,000 each**

Kelsey Cotton, Noah Dunning

**Spencer County Farm Bureau Current
College Student Scholarship – \$2,000**

Courtney Jeffers

**Taylor County Farm Bureau
Scholarship – \$1,000 each**

Alise Butler, Elizabeth Sullivan

**Taylor County Farm Bureau FFA
Scholarship – \$1,500**

Kailey Thompson

**Trigg County Farm Bureau
Scholarship – \$500 each**

Logan Darnall, Nathan Gray,
Ethan Nolcox, Haley Stewart

**Trimble County Farm Bureau
Scholarship – \$500 each**

Ashlynn Cissell, Brody Fugate

**Trimble County Farm Bureau Jason
Jenkins Memorial Scholarship –
\$1,000**

Brody Fugate

**Warren County Farm Bureau
Scholarship – \$4,000**

Madison Fera

**Warren County Farm Bureau R.O.
Buchanan Scholarship – \$4,000**

Anna Sweets

**Washington County Farm Bureau
Scholarship – \$500 each**

Kaitlyn Hale, Elizabeth “Beth”
Osbourne, Mary Elizabeth “Lizzie”
Riley, Garrett Stevens

**Wayne County Farm Bureau
Scholarship – \$2,000 each**

Shawn Abbott, Elliott Cross, Bryce Gossage

Webster County Farm Bureau Scholarship – \$1,000

Shelby Shadrack, Kayla Yates

Whitley County Farm Bureau Scholarship – \$3,000

Abigail Schwarz

**Wolfe County Farm Bureau Educational
Scholarship – \$1,000 each**

Riley Ann Brewer, Chayton Marshall

**Wolfe County Phyllis Amyx Memorial
Scholarship – \$2,000**

Abby Cox

**Woodford County Farm Bureau
Scholarship – \$2,000 each**

Jansen Blair, Anna Manges

**NON-STOP WORKHORSE
FOR A NON-STOP WORLD.**



A NEW WORLD DEMANDS NEW HOLLAND.

The PowerStar™ family of tractors provide unprecedented power, comfort and performance in a UTILITY tractor. These preferred premium tractors are now available with even more horsepower. Select from six models from 64 to 117 engine horsepower with open-air ROPS platform or state-of-the-art cab that feels as though it was designed expressly for you.

COMFORT: spacious, ultra comfortable VisionView™ cab with full size instructor seat, CommandArc Console and optional high visibility roof panel.

POWER: responsive, fuel-efficient engines provide up to 100 PTO hp.

PERFORMANCE: tackle grounds, municipal or farm tasks including mowing, grading, rotary cutting, haying, stacking, loading or other materials handling work.

Learn more about the PowerStar family of tractors at www.newholland.com



**BEECH GROVE
WARD IMPLEMENT
COMPANY INC.**
270-273-3206
www.wardimplementco.com

**RICHMOND
DERBY STATE
EQUIPMENT**
859-623-5167

**SHELBYVILLE
BLUEGRASS
FARM & LAWN**
502-633-1557
www.bluegrassfarmandlawn.net

© 2018 CNH Industrial America LLC. All rights reserved. New Holland is a trademark registered in the United States and many other countries, owned by or licensed to CNH Industrial N.V., its subsidiaries or affiliates. Equipped For A New World is a trademark in the United States and many other countries, owned by or licensed to CNH Industrial N.V., its subsidiaries or affiliates.

McCracken County

October 2, 2019, 6:00 p.m.
St. John's Knights of Columbus Bld.

McCreary County

September 19, 2019, 6:00 p.m.
South KY RECC

Monroe County

September 26, 2019, 6:00 p.m.
Monroe County Extension Office

Muhlenberg County

August 12, 2019, 6:30 p.m.
MCHS East Campus

Oldham County

August 13, 2019, 7:00 p.m.
KFB LaGrange Office

Ohio County

August 20, 2019, 6:30 p.m.
Ohio County Extension Office

Pendleton County

September 26, 2019, 6:30 p.m.
Farm Bureau Office

Rockcastle County

September 20, 2019
Dinner: 6:00 p.m. Meeting: 7:00 p.m.
Roundstone Elementary School

Russell County

September 6, 2019, 6:00 p.m.
Fairgrounds

Scott County

September 17, 2019, 6:30 p.m.
Scott County Extension Office

Simpson County

September 5, 2019, 6:30 p.m.
Franklin Simpson Ag Building

Spencer County

September 30, 2019, 7:00 p.m.
Spencer County Extension Office

Taylor County

September 9, 2019, 7:00 p.m.
Taylor County Farm Bureau Office

Todd County

September 16, 2019, 6:00 p.m.
Petrie Memorial UMC

Trimble County

August 15, 2019, 6:00
Trimble County Extension Office

Warren County

September 21, 2019, 5:00 p.m.
South Warren High School

Wayne County

September 30, 2019, 6:00 p.m.
Aspire Center

Whitley County

September 10, 2019, 6:00 p.m.
Brashears Grocery

HOW TO GET A HEALTHY HOME:

Control the allergens in your home
Control the moisture in your home
Control the air in your home

ALL DRY BASEMENTS

It's not dry until it's All Dry™

-Basement & Crawlspace Platinum Service
-Controls Allergens
-Battery Backup Sump Pumps



In Business for 34 years

270-465-2311

Call 1-800-3 ALL DRY
ALLDRYSOLUTIONS.COM



EXCLUSIVE DISCOUNTS FOR FARM BUREAU MEMBERS

The Farm Bureau protects the future of your farm and your neighbors farms all year long. Today, membership can save you up to \$500 on new Case IH tractors and equipment!

**SAVE
\$300**

on compact Farmall® A & C series tractors, utility Farmall A series tractors, round & small square balers, disc mower conditioners and sickle mower conditioners

**SAVE
\$500**

on utility Farmall® U & C series tractors, Farmall 100A series tractors, Maxxum® series tractors, large square balers and self-propelled windrowers



ELIZABETHTOWN
JACOBI SALES INC.
800-730-2655
jacobisales.com

MAYFIELD
H & R AGRI-POWER
800-455-4747
www.hrgrpower.com

OWENSBORO
H & R AGRI-POWER
800-264-1504
www.hrgrpower.com

GLASGOW
J & J SALES INC.
800-669-5480
www.jjsales.com
270-651-5480

MORGANFIELD
H & R AGRI-POWER
800-869-1421
www.hrgrpower.com

RUSSELLVILLE
H & R AGRI-POWER
800-264-2474
www.hrgrpower.com

HOPKINSVILLE
H & R AGRI-POWER
800-844-3918
www.hrgrpower.com

MURRAY
MCKEEL EQUIPMENT CO.
800-852-9736
www.mckeelequipment.com

SHELBYVILLE
JACOBI SALES INC.
800-730-2684
jacobisales.com



Farm Bureau and the FB State Logo are registered service marks owned by the American Farm Bureau Federation, and are used by CNH America LLC under license from the American Farm Bureau Federation. CNH Industrial America LLC. All rights reserved. Case IH is a trademark registered in the United States and many other countries, owned by or licensed to CNH Industrial N.V., its subsidiaries or affiliates. www.caseih.com



Roadside Farm Market Tour attendees

SUMMERTIME LEARNING OPPORTUNITIES

Roadside Farm Market Tour, Beef Tour, Teacher Workshops, and IFAL

“It’s never too late to learn something new,” said Kentucky Farm Bureau President Mark Haney, as a new season of tours and workshops began, carrying on long-standing KFB traditions of supporting education at all levels.

Haney along with the rest of the Executive Committee members, and dozens of KFB members from across the state participated in this year’s Roadside Farm Market Tour to West Virginia and Virginia, and the annual John C. Hendricks Beef Tour that included stops in Missouri and Iowa.

“The purpose of these tours is to give our members a fresh perspective on the industry by seeing other farming operations and agribusinesses,” added Haney. “We can learn so much from each other and I think these types of tours help to make our state’s agricultural industry better, as we bring back new ideas and a different perspective of traditional practices.”

KFB First Vice President Eddie Melton participated in this year’s Beef Tour. He said as Kentucky’s beef cattle industry has grown to be one of the biggest and best in the country, learning from other operations in other places helps to fortify the sustainable efforts being made to keep the state in the top tier of cattle production.

“We have seen such a growth in our beef cattle industry

over the past several years. We have improved genetics, better infrastructure and more recognition than ever before,” he said. “By visiting these other related venues in different areas of the country, we can learn more as we strive to build an even better cattle industry, as well as recognizing how well we are holding our own when it comes to our production methods.”

KFB Second Vice President Sharon Furches took part in the Roadside Farm Market trip and noticed how willing the market owners in other states were to share their knowledge with Kentucky tour attendees.

“It just goes to show that the people involved in agriculture truly count themselves as one big family, no matter where they live or the kind of farm they own.”

- Sharon Furches

“In being a part of that family, we know and understand the issues each of us face, and we share our ideas and opportunities that can be positive for all of us,” she said.

KFB Teacher Workshops Helping a Second Generation of Teachers

For the past two decades, KFB has offered countless teachers the opportunity to attend numerous workshops as a way to bring ag literacy into their classrooms while earning valuable professional development.

Scott Christmas, Director of Agricultural Education and the Women's Program said the workshops are just one of the many ways KFB supports education be it for teachers or students.

"As an organization, KFB wants to do all it can to support our teachers throughout the state while giving them tools, by way of our ag literacy lessons, to take back to the classroom," he said.

"Our Teacher Workshops are an integral part of our commitment to education and have proven to be so valuable in getting correct ag-related information to students throughout the Commonwealth."

Each workshop includes numerous hands-on activities, a field trip to a local farm or ag-related business, and plenty of learning materials to share with fellow teachers and students.

This year, workshops were held in various locations across the state including Owensboro, Carter Caves, Barren River, Lake Barkley, Pikeville, Lexington and Louisville, giving teachers from all sections of Kentucky the opportunity to participate.

Institute for Future Agricultural Leaders (IFAL)

For more than 30 years, KFB has been bringing high school juniors together for a unique summertime leadership program that allows them to explore different fields of study for careers in agriculture, experience leadership training, and learn more about Farm Bureau. For many of these students, IFAL has been a springboard to promising futures in the agriculture industry.

Jackson Tolle, KFB Director of Young Farmer Programs oversees IFAL, which is held at Murray State University and the University of Kentucky. He said the experience has proven to be something the students always remember.

"I have talked to several IFAL alumni who tell me they stay in contact with fellow participants for years to come just because of the bonds they formed during their five-day leadership event," he said. "I think this speaks well to the kinds of students coming to IFAL and the great experiences they have while attending."

As important as all the components of IFAL are, perhaps the most rewarding is the student participation in a Discussion Meet panel allowing them to debate agricultural issues in a format created by Farm Bureau. Many of these young people will eventually come to participate at the state and national levels in the Discussion Meet competition held during state and national annual meetings.



Top Left: UK IFAL
Top Right: Murray State IFAL
Bottom: John C Hendricks Beef Tour attendees

COUNTY CORNER

Snapshots of County Farm Bureau activities



Union County

Mary Nelle White was recently honored for her years of service by Union County Farm Bureau. She has served the county Farm Bureau in many different roles including President and Vice President, over the years, helping develop several outstanding programs.



Pendleton County

Photo at Left: Pendleton County Farm Bureau members and float riders pose with their first-place float. Photo at Right: The Pendleton Co Women's Committee participated in the Feed the Kids program which bags lunches for underprivileged children. Pictured from Left: Jean Rapp, Linda Daughtery, Esther McClanahan, Bonnie Logan



Grant County

Photo at Left: During the June meeting of the Grant County Farm Bureau five \$1,000 scholarships were given to five high school seniors from Williamstown & Grant County High Schools. Also, two monetary awards were presented to the Grant County Soil Conservation winners in the essay and poster contests. Pictured from left: Travis Rhoton, President Grant County Farm Bureau, Zoey Chaney-Soil Conservation Poster winner, Chase Turner & Corey Fryman-Williamstown High School Scholarship winners. Trent Smith, Ryan Mitts & Paige Simpson- Grant County High School scholarship winners. Mark Kinsey, State Director 6. Not pictured was Elijah Walters, Essay winner Soil Conservation. Photo at Right: Austyn Magee is Grant County's IFAL representative. She is president of the Grant County High School FFA Chapter where she will be a senior this fall.



Oldham County

Agents Steve and Steven Jones with county board president Sam Finney and Dwight Greenwell exhibiting the KFB model T at Oldham County days.



Franklin County

Pictured from left: Agency Managers J.O Osborne and Ed McClure cooking at the Franklin County picnic.



Knox County

Knox County Farm Bureau gave \$1,000 Senior Scholarships for 2019 to Kendall Jay Gray of Knox Central High School, left and Dalton Michael Cook of Lynn Camp High School. The award was presented at Honors Day. Pictured left is Mr. Clowce Hinkle, Knox County President, Kendall Gray and Mr. Scott Payne, Knox County Farm Bureau Insurance Agency Manager. At right is Mr. Hinkle, Dalton Cook, Mrs. Judith Hinkle, Knox County Board Member.





Campbell County

Campbell County Farm Bureau Scholarship Winners. In order from left: Jacob Lippert, Rusty Wolf, Jake Schneider, Mirena Combs, Ellinor Martin, and Anna Rust



Bourbon County

Pictured from left are: Ben Robin, 2nd Vice President, Micah Campbell Agency Manager, Savannah Robin, County President



Wayne County

Wayne County Customer Appreciation Day



Whitley County

President of the Whitley County Farm Bureau, Garrett Croley, spoke to the local Cattleman's Association about the benefits of being a Farm Bureau member and what the local Farm Bureau does in the community.

FARM BUREAU ADVANTAGE
How We're Driving Change.

FARM BUREAU MEMBERS RECEIVE

\$750 BONUS CASH +\$500 CONQUEST CASH

LINCOLN NAUTILUS

BUY NOW, SAVE NOW.

LincolnFarm BureauAdvantage.com

<p>CORBIN LEGACY LINCOLN 800-684-6103 www.legacyfordky.com</p>	<p>DANVILLE STUART POWELL LINCOLN 859-236-8917 www.stuartpowelllincoln.net</p>	<p>ELIZABETHTOWN PINKHAM LINCOLN AUTOMOTIVE 270-737-2460 pinkhamcars.com</p>
<p>OWENSBORO CHAMPION LINCOLN 270-684-1441 www.OwensboroLincoln.com</p>	<p>SOMERSET ALTON BLAKLEY LINCOLN 606-678-5181 www.altonblakleylincoln.com</p>	

* Farm Bureau Lincoln Bonus Cash \$750 offer exclusively for active Farm Bureau members who are residents of the United States. Must be a Farm Bureau member for 30 consecutive days prior to purchase and take new retail delivery from dealer by January 2, 2020. Offer is valid through 1/2/2020 for the purchase or lease of an eligible new 2018/2019/2020 model year Lincoln vehicle. Program #37264: Additional \$500 Conquest Bonus Cash offer exclusively for active Farm Bureau members valid for a purchase or lease from 7/2/19 through 9/30/19 of an eligible new 2018/2019/2020 model year Lincoln vehicle. Customer must have a registered 1995 or newer non-Ford/Lincoln/Mercury vehicle in their name for at least 30 days, to be eligible for this additional \$500 incentive. This offer may not be used in conjunction with most other Lincoln Motor Company private incentives or AXZD-Plans. Some customer and purchase eligibility restrictions apply. Limit one Bonus Cash and Conquest offer per vehicle purchase or lease. Visit LincolnFarmBureauAdvantage.com or see your authorized Lincoln Dealer for qualifications and complete details. Dealers please claim #36816 for Farm Bureau Lincoln Bonus Cash Program and #37264 for additional \$500 Conquest Bonus Cash in Smart VINCENT.

THE LINCOLN MOTOR COMPANY

TIME FOR MORE

DENSITY, QUALITY & UP TO \$5,500* CASH BACK

Go with the baler that's stronger, more reliable and more consistent—for higher-density baling, higher-quality bales **plus more cash in your wallet.**

A 20% increase in belt strength, belt driving force, and capacity give you consistent performance and reliability, so the savings continue season after season.

- \$4,500* cash back on Roll-Belt™ 450 round balers
- \$5,000* cash back on Roll-Belt™ 460 round balers
- \$5,500* cash back on Roll-Belt™ 560 round balers

Stop by today, this offer won't last long. **Offer ends September 30, 2019.**

© 2019 CNH Industrial Capital America LLC. All rights reserved. New Holland Agriculture is a trademark registered in the United States and many other countries, owned by or licensed to CNH Industrial N.V., its subsidiaries or affiliates. CNH Industrial Capital and New Holland Construction are trademarks in the United States and many other countries, owned by or licensed to CNH Industrial N.V., its subsidiaries or affiliates.

*Offer includes \$4,500 cash back when purchasing a new Roll-Belt 450 Round Baler from New Holland, \$5,000 cash back when purchasing a new Roll-Belt 460 Round Baler from New Holland, \$5,500 cash back when purchasing a new Roll-Belt 560 Round Baler from New Holland. See your participating New Holland Dealer in the United States for details and eligibility requirements. Offer is nontransferable. For commercial use only. Offer ends September 30, 2019. Offer subject to change or cancellation without notice.

BEECH GROVE
WARD IMPLEMENT
COMPANY INC.
270-273-3206
www.wardimplementco.com

HOPKINSVILLE
H & R AGRI-POWER
800-844-3918
www.hragripower.com

MAYFIELD
H & R AGRI-POWER
800-455-4747
www.hragripower.com

SHELBYVILLE
BLUEGRASS FARM & LAWN
502-633-1557
bluegrassfarmandlawn.net

MARKETS

U.S. HAY ACREAGE LOWEST SINCE 1908

USDA projects U.S. hay harvested acreage at 52.8 million acres in 2019. This is down only slightly from the 2018 harvested acreage but is the lowest harvested acreage since 1908. Prices for hay continue to rise on limited supply combined with strong domestic and export demand. The most recent NASS price data for May reported \$152 per ton for hay excluding alfalfa, and \$204 per ton for alfalfa. These are the highest monthly prices since 2014 for both types. Record-low hay production is expected in California, Illinois, Maine, Michigan, New York, Ohio, Pennsylvania, Vermont, Washington, and West Virginia. Unfavorable weather has impacted hay as well as other feed crops. To assist livestock producers, USDA's Risk Management Agency has changed its haying and grazing rules for cover crops on 2019 prevented planted acres. U.S. exports of both alfalfa and other hay continued to rise in May, indicating continued strong export demand for high quality animal fodder. Total exports of alfalfa and other hay totaled 3.9 million MT in 2018, down 7.2 percent from 2017. Exports accounted for less than 3.5 percent of total all hay production.

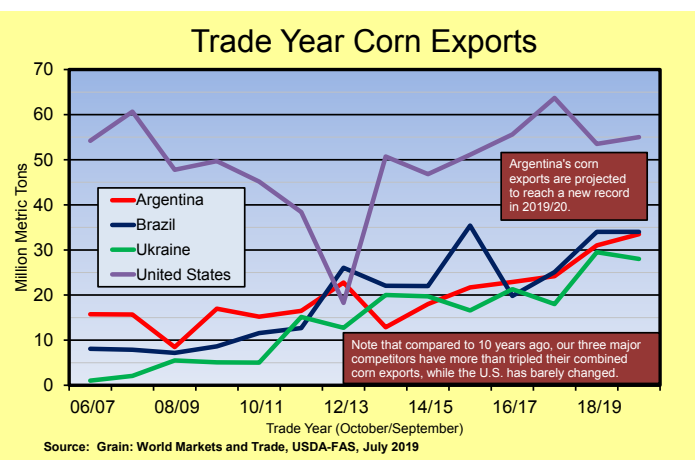
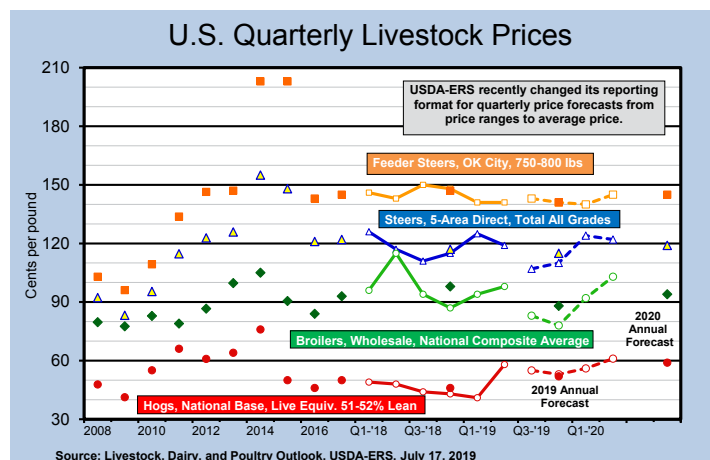
CATTLE HERD EXPANSION LIKELY ENDED

The USDA estimated all cattle and calves in the United States on July 1, 2019 totaled 103 million head, unchanged from July 1, 2018. Before that, 2008 was the last year with at least this many cattle and calves. All cows and heifers that have calved, at 41.7 million head, were slightly below the 41.8 million head from a year earlier. Compared to last July 1, beef cows, at 32.4 million head, were unchanged and milk cows, at 9.3 million head, were down one percent. Beef replacement heifers, at 4.4 million head, were down 4.3 percent from a year ago. Milk replacement heifers, at 4.1 million head, were down 2.4 percent. The combined total of calves under 500 pounds and other heifers and steers over 500 pounds (outside of feedlots) is 37.1 million

head. This is slightly above the 37.0 million head on July 1, 2018. The 2019 calf crop in the U.S. is expected to be 36.3 million head, down slightly from last year's 36.4 million head. Calves born during the first half of 2019 are estimated at 26.5 million head. An additional 9.8 million calves are expected to be born during the second half of 2019.

POULTRY INDUSTRY FACES ECONOMIC CHALLENGES

U.S. broiler and table egg producers are facing economic challenges from rising production and weaker prices. June broiler production totaled 3.51 billion pounds, a 0.6 percent increase year over year. This resulted from 1.0 percent fewer birds harvested and a 1.6 percent increase in the average live weight. Although producers are cutting back on broiler-type egg sets, rising weights should keep broiler production above year-ago levels for the rest of 2019. Based on continued weak domestic demand, USDA forecasts the whole bird price at 83 cents for the third quarter and 78 cents for the fourth quarter. The average price forecast for 2019 is 88 cents per pound, down from 97.8 cents for 2018; USDA expects 2020 to average 94 cents. Table egg producers are also experiencing weak prices due to excess egg supplies. USDA data show table egg production was up 3.6 percent in May and 2.4 percent in June, compared to a year earlier. While the layer flock expansion may slow, an increasing lay rate (eggs per layer) increases production. In May, the lay rate reached an all-time high of 80.52 eggs per 100 layers per day. With supplies outpacing demand, egg prices are under pressure. USDA forecasts the average egg price at 75 cents in the third quarter and 90 cents in the fourth quarter. The 2019 annual average price of 85.5 cents is over 52 cents below the 2018 annual average. USDA forecasts the 2020 annual average price at \$1.00 per dozen.



FOOD for THOUGHT

Why is Rural Broadband access important?

"According to the Federal Communications Commission, 80% of the 24 million American households that do not have reliable, affordable high speed internet are in rural areas.

Those living in rural communities across the Commonwealth of Kentucky fall into this underserved area and this is simply unacceptable.

Rural families, students, communities, entrepreneurs and ag producers need reliable and affordable internet in order to perform ordinary day to day living activities.

Last mile broadband is just as necessary today, as the farm to market roads of the past and the stringing of electricity cable in 1935.

We can't imagine life today without these critical infrastructures, and our future leaders, producers and citizens can't imagine a life without robust broadband internet, nor should they have to!

Just some food for thought!"

Hilda Legg,

State Director of USDA Rural Development - Kentucky



READY TO TILE? KNOW WHAT'S BELOW.
Don't be surprised by underground lines. Call 811 to meet with pipeline and utility operators, discuss your project and have lines marked for **free**.

 **Drain Tile Safety Coalition**
www.draintilesafety.org

KINDER MORGAN



NEW HOLLAND AGRICULTURE

THE ULTIMATE WORKHORSE
AND UP TO \$4,000* CASH BACK

Exclusive dealer offer! **Get up to \$4,000* cash back** on tough, practical WORKMASTER™ Utility tractors. Get best-in-class comfort, value and utility on the farm. For a more productive work day (and great cash-back savings), stop by today.

- \$4,000* cash back on WORKMASTER 50/60/70 Utility tractors
- \$3,000* cash back on WORKMASTER 55/65/75 Utility tractors

This offer won't last long. **Offer ends September 30, 2019.**

CNH INDUSTRIAL CAPITAL

*Offer includes \$3,000 cash back when purchasing a new WORKMASTER 55/65/75 Utility tractor from New Holland. \$4,000 cash back when purchasing a new 50/60/70 WORKMASTER Utility tractor from New Holland. See your participating New Holland Dealer in the United States for details and eligibility requirements. Offer is non-transferable. For commercial use only. Offer ends September 30, 2019. Offer subject to change or cancellation without notice.

© 2019 CNH Industrial Capital America LLC. All rights reserved. CNH Industrial Capital and New Holland Agriculture are trademarks registered in the United States and many other countries, owned by or licensed to CNH Industrial N.V., its subsidiaries or affiliates.

BEECH GROVE
WARD IMPLEMENT
COMPANY INC.
270-273-3206
www.wardimplementco.com

SHELBYVILLE
BLUEGRASS FARM &
LAWN
502-633-1557
bluegrassfarmandlawn.net

CANDID CONVERSATION

KFB Candid Conversation presents a discussion about the topical issues facing the agricultural industry and rural communities in a question and answer format. In this column, Davie Stephens, a soybean, corn and poultry producer from Clinton, Kentucky discusses issues related to the soybean industry and his role as President of the American Soybean Association (ASA).

Tell our readers about the ASA and what this organization does.

Basically, we advocate for farmers through policy work within the states. We'll be 100 years old in 2020, this being our 99th year. That being said, we have 26 state affiliates that make up the American Soybean Association. Those state organizations, like the Kentucky Soybean Association, do policy work in Frankfort. The ASA has 54 directors that represent those 26 states as we advocate for policy in Washington, D.C. We have meetings there twice a year and visit our legislators and various agency administrators. But we also have, what we refer to as advocacy teams, so if there is a more immediate need, members of those advocacy teams will fly in and meet with people on the Hill. We also work closely with the United Soybean Board which is the promotional board that handles the check-off program. It is chaired this year by another Kentucky farmer, Keith Tapp, who does a great job and we work very closely with that group.

What are some of the biggest challenges that you see soybean producers facing at this point in time?

Really, when you look at the current situation, as of today, the first and foremost challenge is China and all the issues surrounding that situation. The U.S. exports 60 percent of our soybeans and about half of that goes directly to China. As you think about that, it is a huge market that we do not want to



Davie Stephens

lose, and at this point, can't afford to lose. With the huge amount that we produce every year, our soybeans need a home. So that is one thing we need to be cognizant of. Keith Tapp and I actually went to China the first of April, along with the United States Soybean Export Council CEO, and met with different key individuals. We have got to make sure that we get past these tariff issues, so we can get back to trading on open free markets.

Often with these challenges we see some opportunities. What are some of the things that you see as an opportunity right now?

ASA and United States Soybean Export Council have been working in other countries to make sure that we get into new emerging markets such as Africa, Asia and Latin America, for instance. We are also working to get into the Philippines and Indonesia. We are trying to make sure that we show the great use of U.S. Soy in the big picture, and we're really putting an emphasis on that, more than ever right now. But progress is being made and we see how important it is not to put all of our eggs in one basket.

Does the diversity of this crop play well with looking for new markets?

One thing that has worked in soybean producers favor, certainly is the fact that the crop is so diverse. There are so many things that it can be used for and that has to play on the positive side for those producers knowing they are raising such a diverse crop; a crop that is used in so many ways and is so needed around the world. The uses of soy are unbelievable. Whether it is going into lotions or seats for Ford Motor Company, it is truly a quality product. It is amazing what that little seed can produce.

As our farming population gets a little older each year, we are really looking toward a younger generation to take over. What do you tell them today?

What you tell them is, everything runs in cycles and I can truly attest to that because I started in a down cycle that was just like this one. But I stayed the course and I just continued to give what it took because I had a passion for farming. And while it did take a lot of extra effort and work, we saw that cycle

evolve over the 90s and into the early 2000s, and it just flourished. They have to understand, you are in it for the long game, not the short game. I want them to keep their head up and their chin up. Another thing for the young people to understand is, there is so much going on in agriculture, not just as a farmer, but in the tech world; whether it is related to bio-tech, that keeps the crops safe, or it's in the technology world. Now computers run the whole machine, and this younger generation has grown up with some of this newer technology.

Are you still excited about the industry even though we are in a tough ag economy?

Yes, I am, and I still see lots of opportunities. It is so nice to see how ag has changed in my lifetime. That lets me connect with ones like my father who showed how ag changed in his time or my grandfather and how it changed in his time. It is just so neat to hear those stories they told and the ones I am now telling. I have served my time on the board and I have enjoyed it. But it is time for the next generation to come on. They are eager. I want to make sure I do all that I can do to pass the torch.



From big to small. From farm to front yard.
As a Farm Bureau® member, you're eligible to save.*



Platinum 2 savings for Farm Bureau® Members.



John Deere Rewards is happy to announce that all Farm Bureau Members* will automatically receive Platinum 2 status. That means instant savings on a wide range of John Deere products: from lawn tractors to skid steers, zero-turn mowers to utility vehicles, and more! Plus you'll save money on Home & Workshop products and at JohnDeereStore.com. To find out more on how you can turn your loyalty into savings, go to JohnDeere.com/FarmBureau. Sign up today!



WRIGHT IMPLEMENT

BOWLING GREEN
270-781-4747

GLASGOW
270-678-9200

HARDINSBURG
270-756-5152

OWENSBORO
270-683-3606

www.wrightimp.com

HENRY COUNTY SUPPLY, INC.

NEW CASTLE
502-845-5620

www.henrycountysupply.com

HUTSON, INC.

CLINTON
844-488-7667

HOPKINSVILLE
844-488-7667

MAYFIELD
844-488-7667

MORGANFIELD
844-488-7667

PADUCAH
844-488-7667

PRINCETON
844-488-7667

RUSSELLVILLE
844-488-7667

www.hutsoninc.com

Rewards

*Must be a valid member of Farm Bureau for 30 days and have a valid email address to be eligible for John Deere Rewards benefits. John Deere's green and yellow color scheme, the leaping deer symbol, and JOHN DEERE are trademarks of Deere & Company.

EIGHT BUCKS

Kentucky State Fair admission tickets are only \$8. Hop to it now and get yours for \$7!*

*Offer available online only through Aug. 14.



Presented by GenCanna

AUGUST 15-25, 2019

Kentucky Exposition Center
Louisville, KY | kystatefair.org



WHEN IT COMES TO PLANTERS,
THE GOLD STANDARD ISN'T RED OR GREEN.

BECAUSE PRECISION ISN'T A PAINT JOB.

Look beyond the color scheme. Dig deeper. And do your homework. You can be sure Kinze does. You'll find proof in every planter and grain cart that bears our name. Precision is personal to us, because it's everything to you. Our focus will always be on your results, no matter the color of your loyalty.

KINZE.COM

BEECH GROVE
WARD IMPLEMENT COMPANY INC.
270-273-3206
www.wardimplementco.com

HOPKINSVILLE
H & R AGRI-POWER
800-844-3918
www.hragripower.com

RUSSELLVILLE
H & R AGRI-POWER
800-264-2474
www.hragripower.com

KINZE

PRECISION IS PERSONAL



With its heavy-duty construction, long service life and minimal maintenance, a Grasshopper zero-turn mower's timesaving performance is only the beginning. You'll enjoy lower operating costs, too.



IT'S SO MUCH MOWER®

ASK ABOUT **ZERO%** FINANCING*



"Voice of Kentucky Agriculture"

**Farm Bureau
Members
Save 15%**

*WAC. See store associate for details. © The Grasshopper Company

BEECH GROVE
WARD IMPLEMENT COMPANY INC.
270-273-3206
www.wardimplementco.com

RICHMOND
BISHOP'S SMALL ENGINE REPAIR
859-624-1893
www.bishopssmallenginerepair.com

SHEPHERDSVILLE
2M TRACTOR & LAWN
502-955-7011
www.2mtractor.com

DR. JAMES W. MIDDLETON RECEIVES KENTUCKY LEOPOLD CONSERVATION AWARD

Dr. James W. Middleton of Munfordville is the recipient of the 2019 Kentucky Leopold Conservation Award®.

The prestigious award, given in honor of renowned conservationist Aldo Leopold, recognizes extraordinary achievement in voluntary conservation and management of natural resources by American farmers, ranchers and foresters in 20 states.

In Kentucky, the \$10,000 award is presented annually by Sand County Foundation, the Kentucky Agricultural Council, and the Kentucky Association of Conservation Districts.

Dr. Middleton was presented with the \$10,000 award at the Kentucky Association of Conservation Districts Convention on July 9.

"My whole life is centered around my love affair with Hart County. I have spent my life taking care of the people (as a country doctor) and the land (as a farmer)," says Dr. James W. Middleton.

Among the many outstanding Kentucky landowners nominated for the award were finalists: JRS Angus Farm of Lawrenceburg in Anderson County, and F.L. Sipes Farm of Ekron in Meade County.

The Kentucky Leopold Conservation Award is made possible thanks to the generous support and partnership of Kentucky Agricultural Council, Kentucky Association of Conservation Districts, Kentucky Farm Bureau Federation, Kentucky Department of Agriculture, Kentucky Corn Growers Association, Kentucky Department of Fish and Wildlife Resources, University of Kentucky College of Agriculture, Food and Environment, Kentucky Woodland Owner's Association, Kentucky Tree Farm Committee, Kentucky Cattlemen's Association, AgriBusiness Association of Kentucky, Kentucky Pork Producers, The Nature Conservancy in Kentucky, and the U.S Department of Agriculture's Natural Resources Conservation Service.

For more information on the award, visit www.leopoldconservationaward.org

**YOU WILL NEVER FIND A
TOUGHER PIECE OF EQUIPMENT
THAN AN ARTEX
EUEER.**



**BUY YOUR
ARTEX AT**

LEXINGTON, KY | 859-690-9745



**RED BARN
AND ASSOCIATES**




Some farmers need a spreader that can handle it all. Artex spreaders are the highest of quality and precisely manufactured to pulverize any kind of material for superior spread distance and uniformity. Our entire line of spreaders is made with you in mind. We only build machines that will keep up with your long hours and days when you need to simply get the job done. An Artex spreader will give you everything you need to keep production moving.



FEATURES

10 GAUGE STEEL WALLS	180 DEGREE SPREAD - 4000 LBS IN 10 MINUTE SAILS	INSET GUILLotine GATE	ARTICULATING HITCH	HMW POLY FLOOR
-------------------------------------	--	--------------------------------------	-------------------------------	---------------------------

ARTEXMFG.COM

<h3>Ag Directory</h3>  <p>AGRICULTURE WORKFORCE MANAGEMENT ASSOCIATION</p> <p>"Owned and Managed by Agricultural Employers"</p> <p>The primary function of Agriculture Workforce Management Association, Inc. (AWMA) is to provide guidance to its stockholder employers who wish to apply for temporary alien agricultural labor certification for the purpose of employing H2A workers on a temporary or seasonal basis.</p> <p>(859)233-7845 www.awmalabor.com</p>	<h3>Livestock Directory</h3> <p>KDDC salutes the hardworking families of Kentucky. Celebrate with us by enjoying some delicious, nutritious dairy products.</p> <p>KDDC New Executive Director Kentucky Dairy Development Council H.H. Barlow <i>Working for Kentucky's Dairy Farmers</i></p> <p>176 Pasadena Drive Lexington, KY 40503 Cell: 859-516-1129 Email: kddc@kydairy.org http://www.kydairy.org</p>
<h3>Service Directory</h3>	
<p>ROCK BRIDGE TREES</p> <p>TREES GROWN ON PURPOSE FOR A PURPOSE</p>  <ul style="list-style-type: none"> ✓ Pecan Trees for Kentucky ✓ Flowering Trees For Bees ✓ Wildlife Trees <p>www.RockBridgeTrees.com RockBridgeTrees@gmail.com 615-841-3664 199 Dry Fork Creek Rd Bethpage, TN 37022</p>	<p>Steel Mobile Home Roofing</p> <p>Leaks? High energy bill? Roof rumble?</p> <p>Contact us at 800.633.8969 or roofover.com</p> <p>PERMA-ROOF <i>from Southern Builders</i></p>  <p>Mobile Home Roofover Systems Since 1983</p>
<h3>Events</h3>	
<div> <p>Kentucky Wood Expo September 20 & 21, 2019 Masterson Station Park, Lexington, KY</p> <p>Events:</p> <ul style="list-style-type: none"> - Lumberjack Contests - Live Chain Saw Carving - Skidder & Knuckleboom Contests - Continuing Education for Loggers & Landowners - Live Demonstrations of Machinery & Equipment - Inside & Outside Exhibits - Live Bluegrass Music and much more <p>Tickets: \$7 at gate; 6 & under - Free For more information: 502-695-3979 / www.kywoodexpo.com</p> </div> <div> <p>To Advertise Here Call 800-798-2691</p> </div>	



DOWN THE BACKROADS

By Tim Thornberry

“The pen is mightier than the sword.” I’m sure you have heard this famous saying before. It was written by Edward Bulwer-Lytton in 1839 and is a line from a play. My interpretation is pretty simple; words can often be more powerful than weapons or brute strength.

With that said, my dad wasn’t all that familiar with Edward Bulwer-Lytton when he bought boxing gloves for me and my brother in 1967. I believe his motive was to teach us to defend ourselves should the need ever arise.

Learning to box was fun, at first. It was more like a game to us until the first bloody nose came along. Unfortunately, it was mine.

I discovered quickly that hand-to-hand combat was not my forte, to the chagrin of my father. He came from the old school where strength was power. I decided early on that the old school method was just not for me.

I was more from the “Let’s talk this thing out,” school; more of a negotiator than a combatant; more into sitting down and discussing the issues as opposed to striking first and asking questions later.

My first attempt at being a supreme moderator came during a youth softball game while playing first base. We had a fantastic pitcher during that particular game and most of the opposing-team hits were grounders coming right back to him. All he had to do was make a nice easy throw to me to get the out.

Unfortunately, he was better at getting the ball across the plate than getting the throw to first base. After three misses, he began to get mad at me as opposed to recognizing his own weakness.

A time-out soon came to try and remedy the issue. As we huddled on the mound, our pitcher immediately blamed me for not catching the ball. I replied by reminding him I wasn’t 10 feet tall.

As tempers heated up, my first

thought was how embarrassing it would be if our disagreement came to fisticuffs. After all, we were on the same team. In recognizing that his misthrows were all going over my head, I recommended that he take more time the next time he had to make a throw to first; to just relax and not rush the throw.

We returned to the game, my suggestion worked, and we walked away with a victory. My pitcher and I would remain good friends after that, and we never had another meeting at the mound.

I discovered two things that day. First, talking it out is easier than wrestling in the dirt. But more importantly, I would discover that if we take the time to discuss an issue, even if we are disagreeing, generally a solution could be found or at least an understanding.

I often think about that time in my life and think about what my dad would have done on the mound that day. Likely a butt-whooping would have ensued. However, the power of words can so often tame a situation and prove to be much more effective than a physical confrontation which only causes ill-feelings that often last a lifetime.

Since that day, I have often used words in a positive way to make a point, solve a problem, keeping the boxing gloves tucked away, as I travel down the backroads.

HOMESHIELD

Cleaning at a microscopic level™

**REMOVES ALLERGENS FROM DUCTWORK
24/7 WITH ALL DRY PROBIOTICS
FOR A HEALTHY HOME**

WE CAN SAVE YOU MONEY!

Save \$300
by using coupon code
HHADAC

In Business for 34 years

270-465-2311

Call 1-800-3 ALL DRY
ALLDRYSOLUTIONS.COM



FARM BUREAU MEMBERS RECEIVE

\$500 BONUS CASH*
+\$500 CONQUEST CASH*

FORD F-150

BUY NOW, SAVE NOW.

FordFarmBureauAdvantage.com

BUILT

Ford

PROUD

BRANDENBURG
RAY'S FORD
270-422-4901
www.raysford.com

CORBIN
LEGACY FORD LINCOLN
606-528-1904
www.legacyfordky.com

DANVILLE
STUART POWELL FORD, INC.
859-236-8917
www.stuartpowell.com

ELIZABETHTOWN
BOB SWOPE FORD, INC.
270-737-1000
www.bobswopeford.com

HARTFORD
MOORE FORD - MERCURY
270-298-4800
www.mooredeals.com

HENDERSON
DEMPEWOLF FORD
800-737-9653
www.dempewolf.com

MADISONVILLE
WATERMARK FORD OF
MADISONVILLE
270-821-4100
www.watermarkfordky.com

OWENSBORO
CHAMPION FORD LINCOLN, INC.
270-663-0681
championowensboro.com

RICHMOND
MADISON COUNTY FORD LINCOLN
859-623-3252
www.madisoncountyford.com



"Voice of Kentucky Agriculture"

SHELBYVILLE
O'BRIEN FORD OF SHELBYVILLE
502-633-4535
www.obrienford.com

SOMERSET
ALTON BLAKLEY FORD
606-678-5181
www.altonblakleyford.com

* Farm Bureau Ford Bonus Cash \$500 offer exclusively for active Farm Bureau members who are residents of the United States. Must be a Farm Bureau member for 30 consecutive days prior to purchase and take new retail delivery from dealer by January 2, 2020. Offer is valid through 1/2/2020 for the purchase or lease of an eligible new 2018/2019/2020 model year Ford vehicle. Program 37264: Additional \$500 Conquest Bonus Cash offer exclusively for active Farm Bureau members valid for a purchase or lease from 7/2/19 through 9/30/19 of an eligible new 2018/2019/2020 model year Ford vehicle. Customer must have a registered 1995 or newer non-Ford/Lincoln/Mercury vehicle in their name for at least 30 days, to be eligible for this additional \$500 incentive. Not available on Shelby GT350®, Shelby® GT350R, Mustang BULLITT, Ford GT, Focus RS, and F-150 Raptor. This offer may not be used in conjunction with most other Ford Motor Company private incentives or AXZD-Plans. Some customer and purchase eligibility restrictions apply. Limit one Bonus Cash and Conquest offer per vehicle purchase or lease. Visit FordFarmBureauAdvantage.com or see your authorized Ford Dealer for qualifications and complete details. Ford Dealers please claim #36816 for Farm Bureau Program and #37264 for additional \$500 Conquest Bonus Cash in Smart VINCENT.



Proudly supporting the next crop of Kentucky farmers.

Farming in Kentucky has seen dramatic changes over the past century. New technologies. New practices. New ways of bringing products to market. In the midst of these changes, the future of Kentucky agriculture demands that tomorrow's farmers be educated in the field and in the classroom. Kentucky Farm Bureau proudly supports giving young farmers the tools, skills and knowledge they need for success. Why Farm Bureau? Because education ensures a brighter future for all Kentuckians.



KENTUCKY FARM BUREAU
KFB 100 YEARS
EST. 1919